

Adult onset Langerhans cell histiocytosis easily misdiagnosed entity - a rare case report

Introduction

Langerhans cell histiocytosis (LCH), characterized by intense and abnormal proliferation of bone marrow derived histiocytes (Langerhans cells), is a rare disease that generally affects children. Here we are presenting a case of purely cutaneous LCH in 41 year old male without systemic involvement.

Case presentation

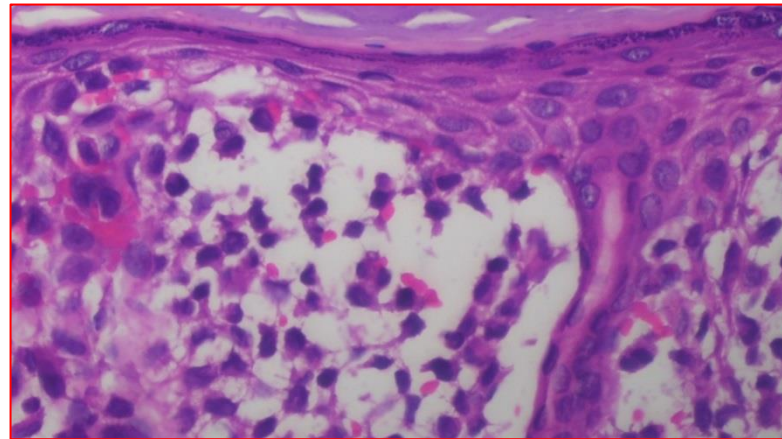
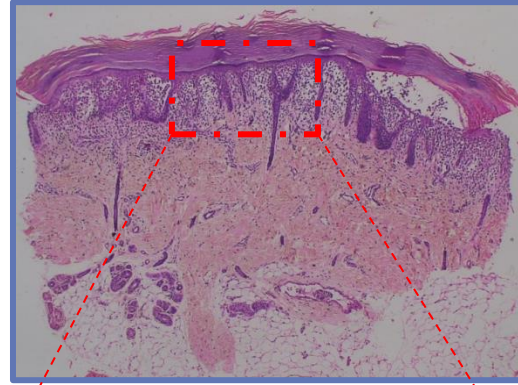
A 41 year old male presented with red papules and plaques over face, scalp and bilateral axilla for last 3 years. He was diagnosed as seborrheic dermatitis, eczema, candidiasis and Hailey-Hailey disease etc. by various clinicians and treated without any significant improvement. On cutaneous examinations, multiple erythematous crusted papules and ulcerated plaques present over face, scalp, retro-auricular area, both axillae, and nasal folds. Erosions were present over hard palate and lips. Bilateral submandibular lymph nodes were enlarged.



Seborrheic dermatitis like lesion over face



Erosions over axillae



Rich dermal infiltrate with large histiocytes with reniform nucleus (40X)

Immunohistochemistry
diffuse expression of
CD1a and S-100

Casework-up

Routine urine analysis, biochemical investigations, complete blood count, abdominal ultrasonography, chest radiography, and contrast-enhanced computed tomography chest were within normal limits. Complete skeletal survey done was normal and no pathological findings were detected upon bone marrow biopsy. Patient was referred to oncologist for further management, after that we lost follow up of the patient.

Conclusion

Adult LCH is rare and easily misdiagnosed entity as seborrheic dermatitis, eczema, candidiasis, Hailey-Hailey disease or pemphigus vegetans. The prognosis depends on onset of the age and the quantity of affected organs.

Poster ID-56, Dr.Paras Choudhary